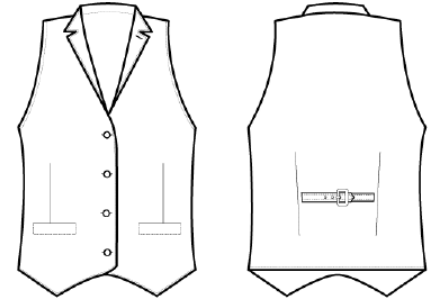


CARTON	PACK	NO. SKU'S
24	4	12

**PR626**  
**LADIES' HERRINGBONE WAISTCOAT**



Colour	Pantone	C	M	Y	K
Navy	2766	100	87	0	34
Charcoal	6U	100	79	44	93

**Fabric**  
50% Polyester, 45% Wool, 5% mixed fibres. 300gsm

**Colours** Navy, Charcoal

**Sizes** XS, S, M, L, XL, 2XL

**Features**

- Satin lining to the underside and reverse
- Four button fastening
- Two front open pockets
- Lapel collar
- Adjusting buckle on the back
- Front and back darts for fitting

**Country of Origin** China

**Carton Dimensions** 60cm x 40cm 22cm

**Carton Weight** 13kg

**VAT Code** 6211 490 000

Size	XS	S	M	L	XL	2XL
Dress size	8	10	12	14	16	18
Bust to fit"	30	34	38	42	46	50
Bust to fit cm	76	86	96	106	116	126
Bust actual cm	80	88	96	104	112	120
DE,NL	32	36	40	44	48	52
FR,ES,PT	32	36	40	44	48	52
IT	36	40	44	48	52	56
Back length cm	55	55	55	55	55	55

**Marketing Description**

An attractive, versatile waistcoat with for ladies. Styled with a lapel collar that leads into the main body of the waistcoat with four button fastening. The Herringbone pattern has been achieved by two coloured yarns being woven together. This waistcoat is fully lined on the underside and to the reverse where there is a buckle for the wearer to adjust accordingly. A highly versatile style that provides a solution for front-of-house service teams and smart corporate dressing occasions.



WOOL CYCLE