

PR622 Men's Lined Polyester Waistcoat

Description

A men's waistcoat with five buttons and two functional watch pockets makes for a really stylish piece of hospitalitywear. This waistcoat is fully lined and comes with a satin-feel back where there is a buckle adjuster for a more fitted appearance.

Product Features:

- Satin-feel back with adjuster
- Two functional watch pockets
- Five button fastening
- Fully lined

Available In:

2XS, XS, S, M, L, XL, 2XL

Certifications:

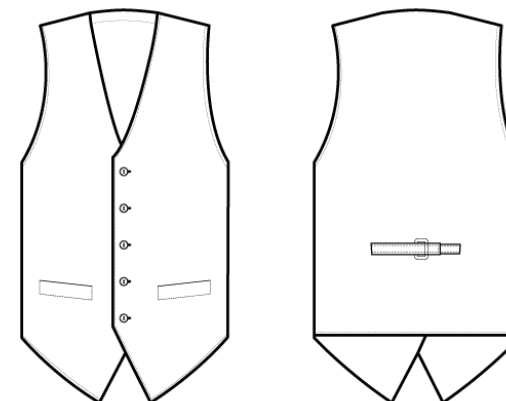


Colours:

Colour	Pantone	C	M	Y	K
Black	Black c	0	0	0	100

Fabric:

100% Polyester Plain Weave, 185gsm.



Suggested Decoration:

Screen Print, Transfer Print, Embroidery

Country of Origin:

China

Commodity Code:

6211 33 1000

Features:



Wash Care:



Carton Information:

Sizes	Carton	Pack	SKU's	Carton Weight	Carton Dimensions
All Sizes	24	6	7	10kg approx.	60cmx40cmx22cm

Garment Sizes:

Call size	2XS	XS	S	M	L	XL	2XL
Chest to fit"	30	32	36	40	44	48	52
Chest to fit cm	66	76	86	96	106	116	126
Chest actual cm	82	92	102	112	118	126	134
Back length cm	58	58	58	58	58	58	58